

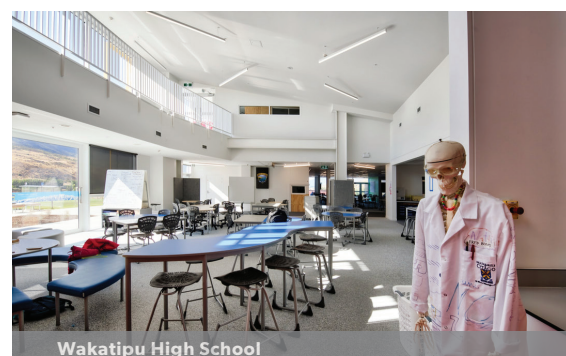
Shotover



Ormiston School



Wakatipu High School



Wakatipu High School

Product Details

Colour Temperature:

- 2700K, 3000K, 4000K as standard
- Range 2200K - 7000K available
- RGB, RGBW, RGBW + WW / + CW
- Tunable White
- Dim to Warm

LED Output Range (Direct)

- 9.6W/m 900lm/m – 57.6W/m 5000lm/m

LED Lifespan

L90 B10 >100,000 hours

LED Tape IP Rating:

- IP20
- IP65 (waterproof)

Dimming:

- Non- dimming
- DALI
- Push to dimm
- Cassambi (phone app)
- Phase Dimming
- 1-10V

Light Distribution:

- Direct only

Mounting options:

- Wire suspension
- Rod suspension
- Direct wall mount
- Direct ceiling mount

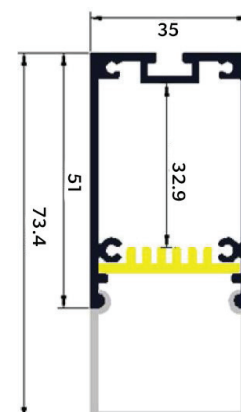
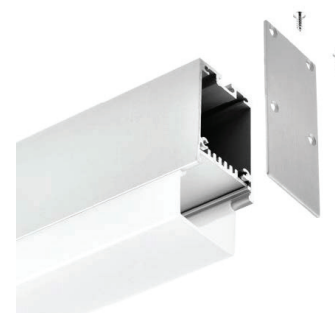
Profile colour options:

- Natural aluminium
 - Black (matt or textured)
 - White(matt or textured)
 - Silver (textured or anodised)
- (Custom colours on request)

Shape options: (**Mitred Joins)

- Linear

ALUMINIUM EXTRUSION 35mm x 73.4mm x INT 30mm



Industrial Commercial
Lighting is a New Zealand
owned and operated
lighting solutions company
based in the South Island

We provide industrial, commercial,
architectural, sports, design and
consulting lighting services.

Contact us for more information, or
to discuss how we can assist you with
a tailored lighting solution.

Phone **03 385 2291**
Email **contact@iclighting.co.nz**

www.iclighting.co.nz

