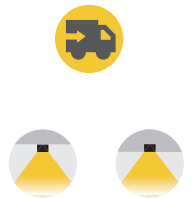


Aluminium Profile



STANLEY

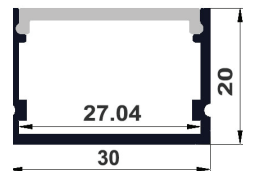
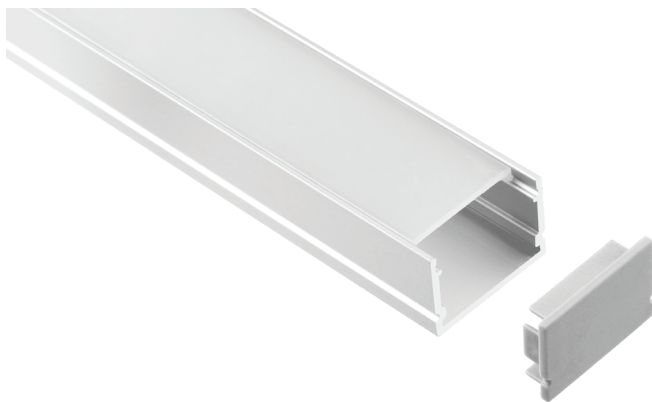
ALUMINIUM PROFILE 30mm x 20mm x INT 27.04mm



Stanley is a surface mount or flangless recessed aluminium profile that comes complete with an easy cut opal diffuser as standard.

Stanley is suitable for single or double rows of low to high output tapes, CCT, RGB, RGBW, RGB+W+WW and IP rated tapes.

Standard in 2m lengths in an anodised finish, with custom colour options available.



*We can custom colour this profile to suit your project. Please contact us for a quote.

This is an indent product, standard in 2m lengths. Please contact us for lead times.

ORDER CODE	DESCRIPTION
ICL-STANLEY	STANLEY ALUMINIUM PROFILE SURFACE MOUNT
ICL-END-STANLEY	STANLEY END CAPS
ICL-MOUNT-STANLEY	STANLEY MOUNTING CLIPS

Industrial Commercial
Lighting is a New Zealand
owned and operated
lighting solutions company
based in the South Island

We provide industrial, commercial,
architectural, sports, design and
consulting lighting services.

Contact us for more information, or
to discuss how we can assist you with
a tailored lighting solution.

Phone **03 385 2291**
Email **contact@iclighting.co.nz**

www.iclighting.co.nz

