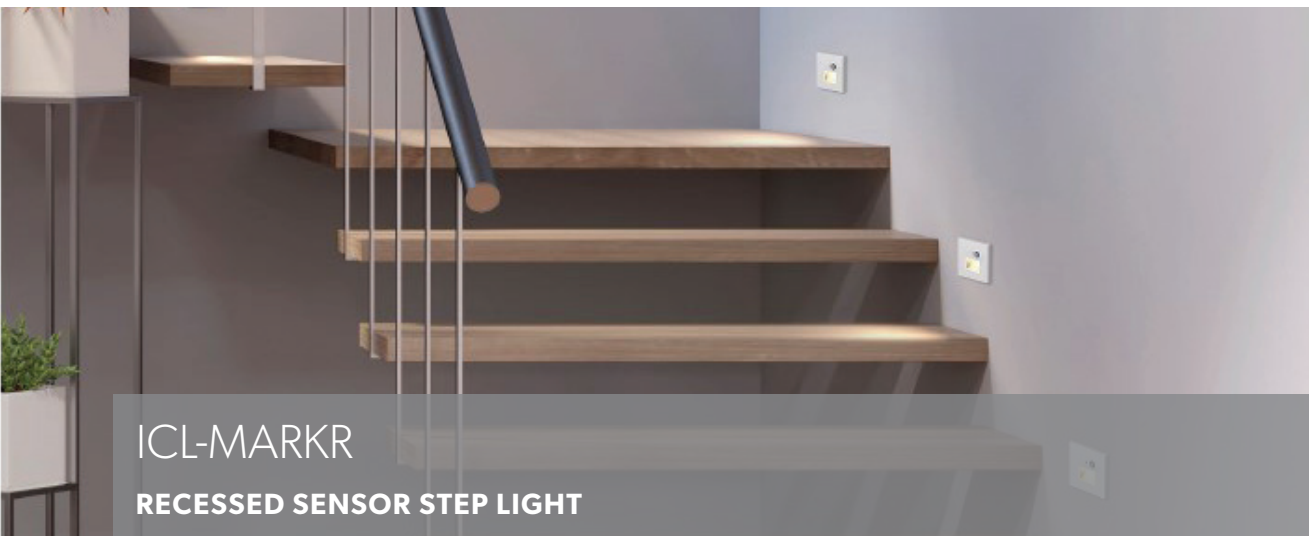
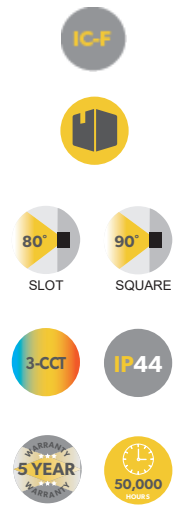


Step Light



ICL-MARKR
RECESSED SENSOR STEP LIGHT



Introducing the ICL-MarkR recessed sensor step light, a cutting-edge solution for modern architectural lighting needs. Engineered with a compact design and a round cavity wall wiring box, this LED step light boasts built-in drivers and quick push terminals for swift installation, offering both loop in and loop out capabilities for added flexibility. Available in black and white.

A versatile design with a single light body accommodating four clip-on trim options, in either square or round light shapes, catering to various aesthetic preferences. Experience energy efficiency and enhanced lighting control with integrated daylight and PIR sensors, ensuring smart lighting experiences. The light offers adjustable colour temperature (3000K, 4000K, 5700K) via a convenient slide switch, IP44 rating on the front part and flicker-free internal driver, and an IF-C rating that ensures it complies with NZ safety standards.

Watts:	1W, 2W
IP Rating:	IP44
Lumens:	1W (SQ): 35-40lm 2W (SQ): 60-80lm NOTE: The slot version lumens are only 10% of the square-hole version
Operating Temperature:	-20°C to +30°C
Input Voltage:	AC200-240V
Dimensions:	Round: Ø80 x 41mm Square: 80 x 80 x 41mm
Cut Out Diameter:	67mm
Beam Angle:	Square clip-on: 90° Slot clip-on 80°
Dimming:	Non-dimming
Sensor:	PIR sensor & Daylight sensor
Product Colour:	Black or White
Colour Temperature (CCT):	3000K / 4000K / 5000K / 5700K
CRI:	80
Protection Class:	II
Life:	50,000 Hours
Warranty:	5 Years



ORDER CODE	DESCRIPTION
<i>x= S (square shape) or R (round shape) yy = SQ (square hole face plate) or SL (slot face plate)</i>	
ICL-MARKR-1W-x-yy	STEP LIGHT MARKR 1W 3-CCT (shape / colour / face plate to be advised)
ICL-MARKR-2W-x-yy	STEP LIGHT MARKR 2W 3-CCT (shape / colour / face plate to be advised)

IC-F Installation Spacing

Building insulation that abuts or covers the luminaire has to be suitable for 90°C and comply with a 30 second needle flame test of AS/NZS 60695.11.5.

RISK OF FIRE:

Required clearance from structural and building elements
 SCB=0mm HCB=0mm MIC=0mm SCI=0mm

HCB: Height clearance to building element
 MIC: Minimum insulation clearance
 SCI: Side clearance to insulation
 SCB: Side clearance to building elements

Safety Instructions

Basic safety precautions should always be followed, including the following:

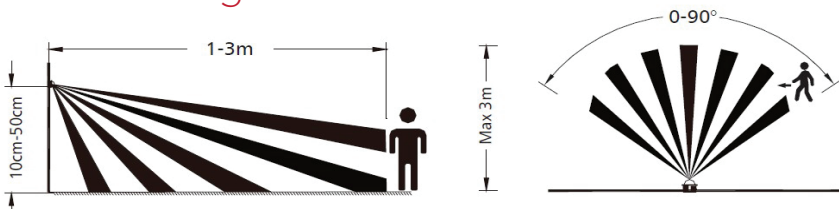
- 1: First read the instructions & check you have all the tools and accessories to complete the installation.
- 2: Installation to be done by a licensed electrician only.
- 3: Always ensure the power is OFF and the fitting has cooled down before installing, performing any maintenance, cleaning, changing or adjusting the fitting.
- 4: Do not install the luminaire near a heat source.
- 5: Do not exceed the nominal supply voltage or amperage ratings.
- 6: To avoid injury or damage to the fitting, please ensure that power leads and screws are secure before connecting to power. After installation is complete check circuit before turning unit on.
- 7: Product modification and improper installation will void warranty.
- 8: Light source of the luminaire is not replaceable; if it is damaged the luminaire should be destroyed.

WARNING: Risk of overheating if the clearance distances below are compromised.



CAUTION:
 Risk of electric shock

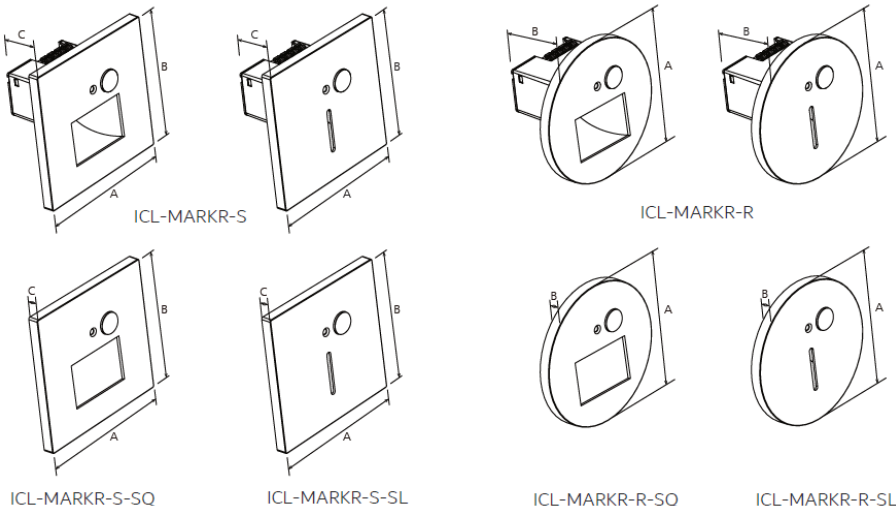
Sensor Range



Sensor details (fixed settings)

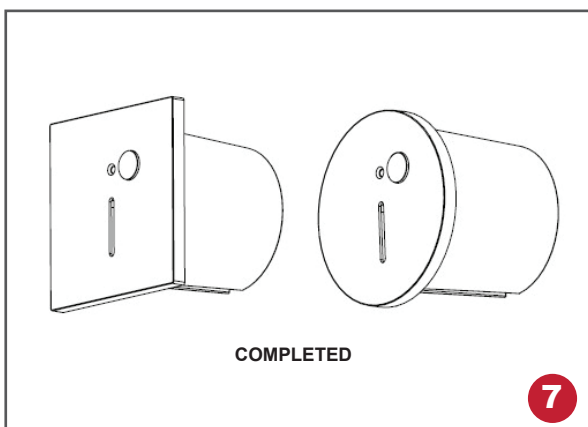
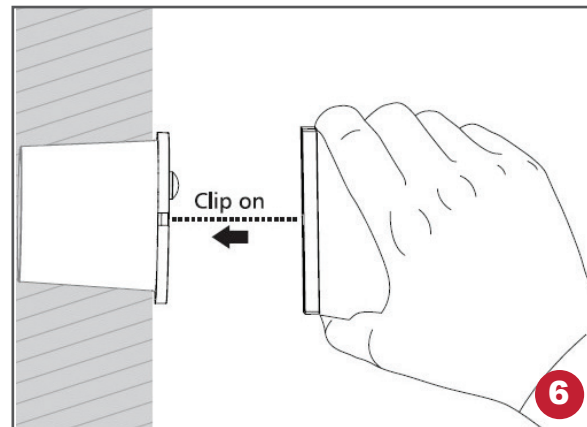
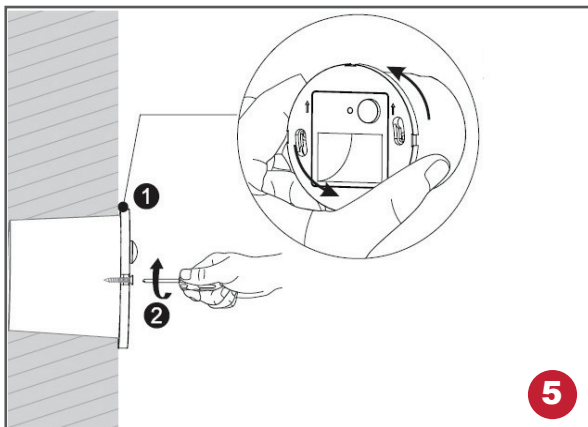
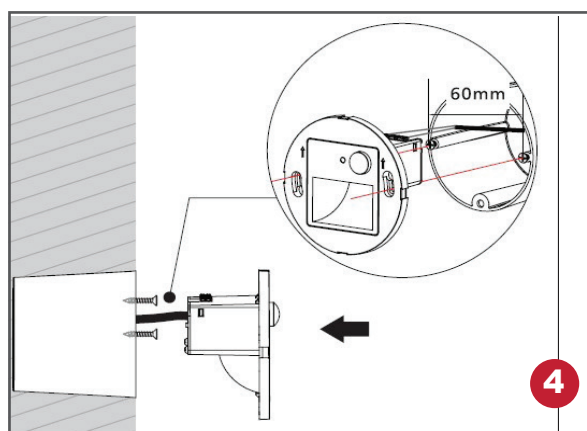
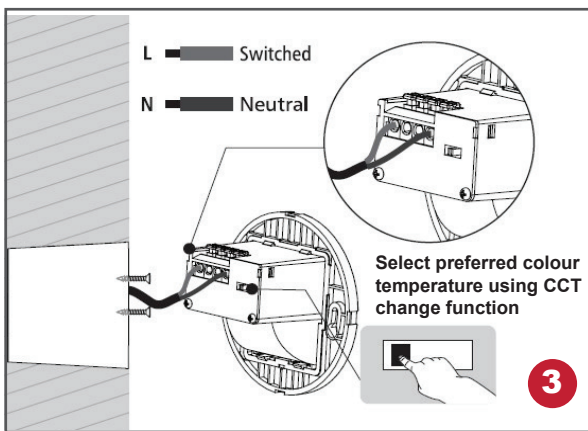
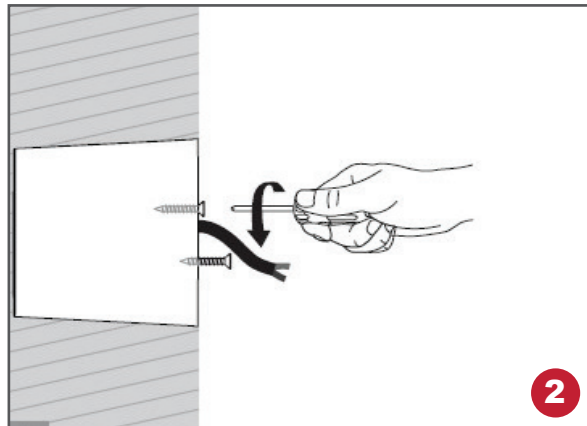
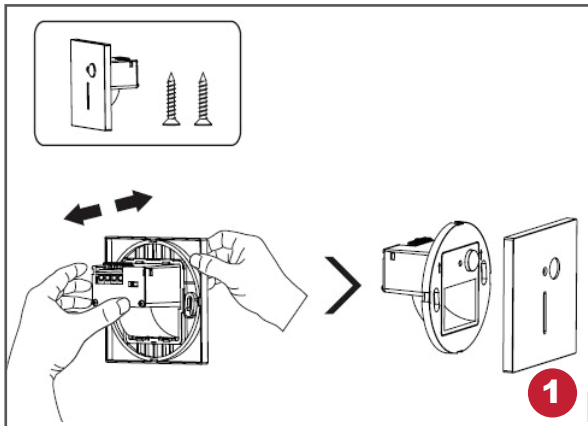
Detection area	1-3m
Detection angle	90°
Hold time	30 seconds
Operating temp	20°C~60°C
Daylight sensor	If ambient lux less than 15, and movement is detected, it lights up for 30 seconds

Dimensions



Code	Dimensions (mm)		
	A	B	C
ICL-MAKR-S (1W/2W)	80	80	41
ICL-MAKR-R (1W/2W)	Ø80	41	
ICL-MAKR-S (SQ / SL face)	80	80	6.2
ICL-MAKR-R (SQ & SL face)	Ø80	6.2	

Installation Instructions



Industrial Commercial
Lighting is a New Zealand
owned and operated
lighting solutions company
based in the South Island

We provide industrial, commercial,
architectural, sports, design and
consulting lighting services.

Contact us for more information, or
to discuss how we can assist you with
a tailored lighting solution.

Phone **03 385 2291**
Email **contact@iclighting.co.nz**

www.iclighting.co.nz

